

Lat/Long Field INSTRUCTIONS

Kernza 2023 Fall Report

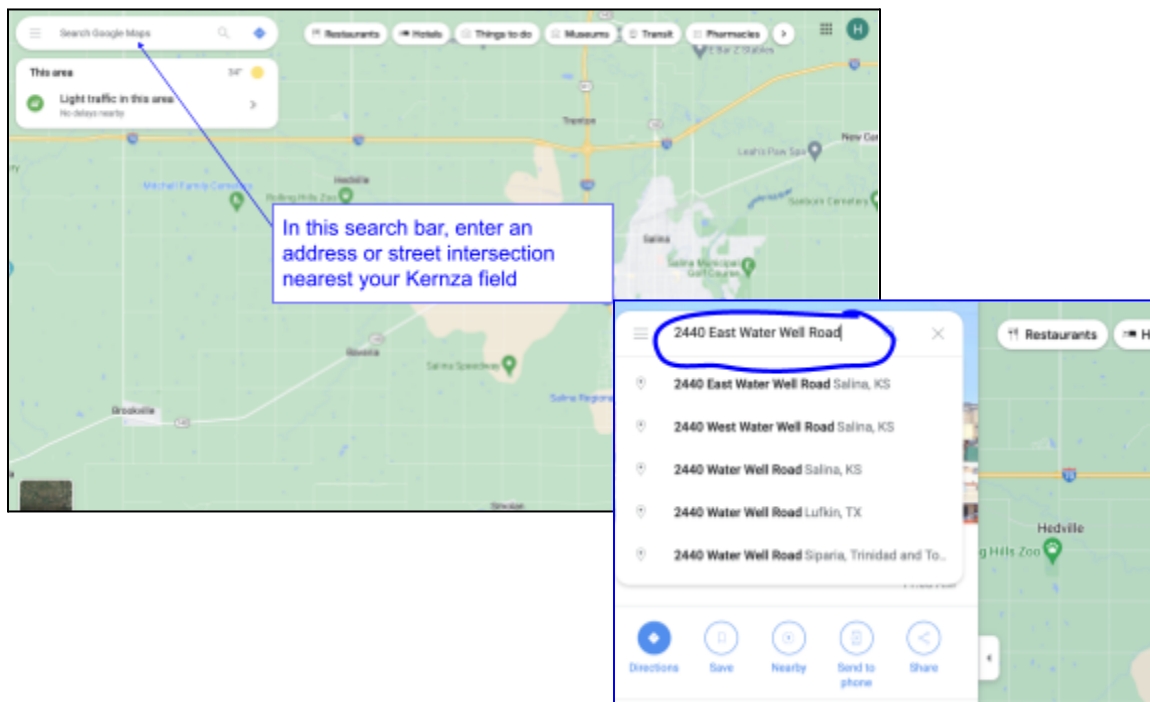
Step 1

Open Google Maps: <https://www.google.com/maps>



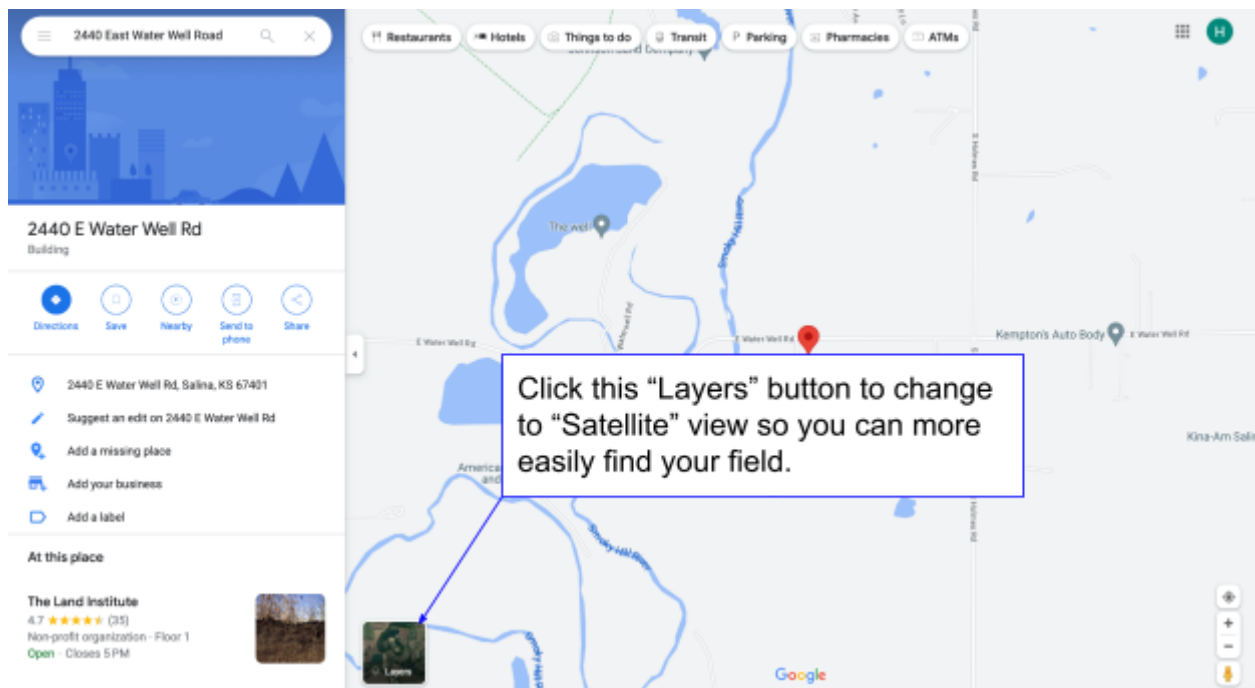
Step 2

Search for the nearest street location to your field



Step 3

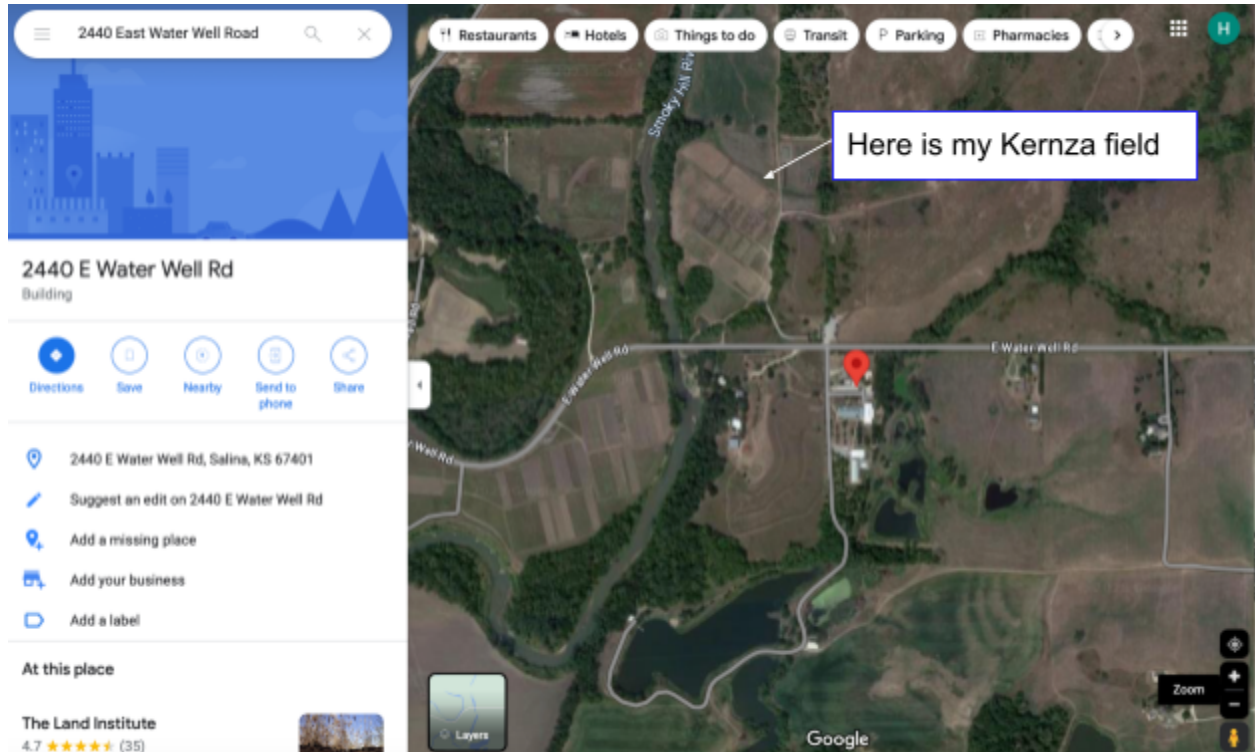
Change the “Layers” view to “Satellite” view so you can see the terrain around your location.



Step 4 (next page)

Step 4

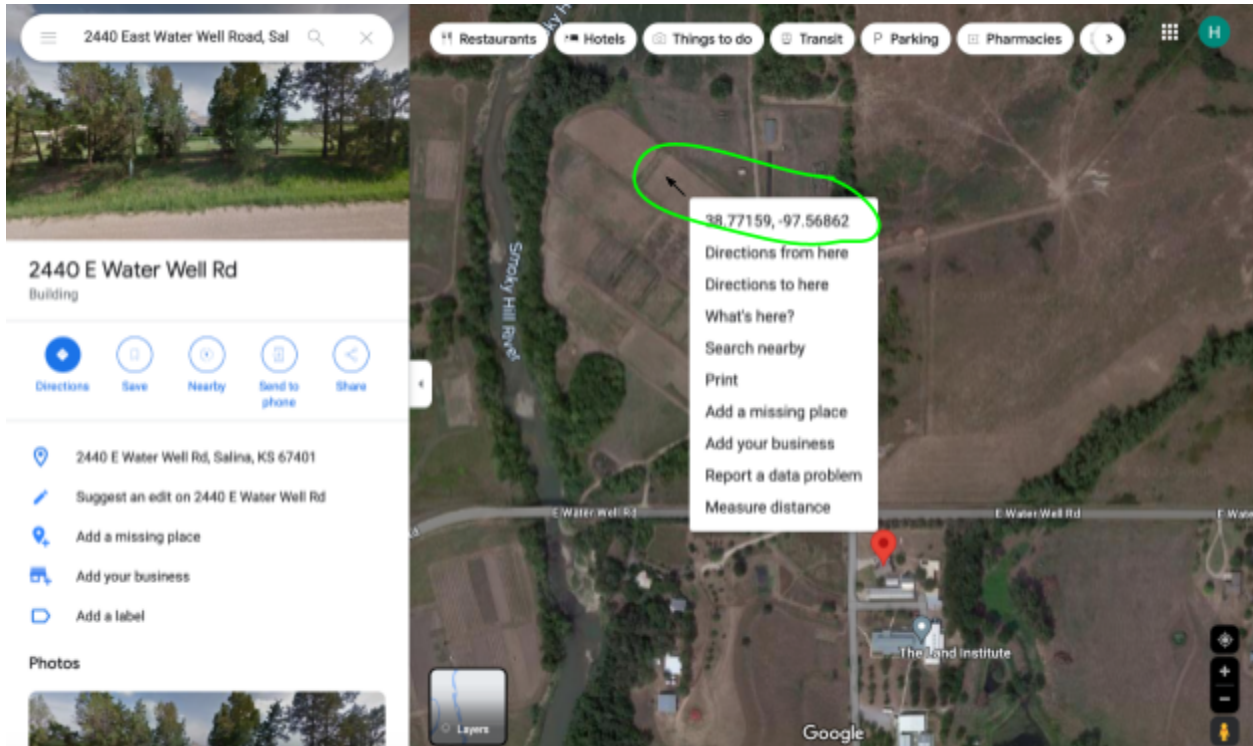
Locate your Kernza field, you may need to Zoom in using the zoom button (looks like a + and - sign in the bottom right corner).



Step 5 (next page)

Step 5

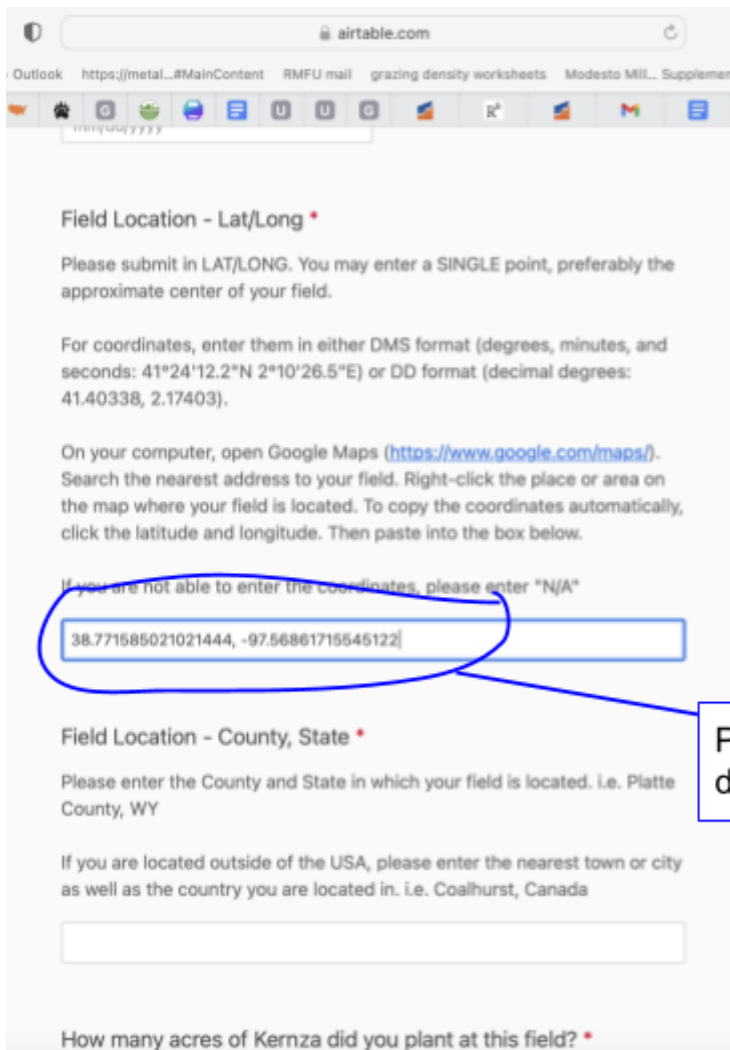
Right click (or use the keyboard button “command” and click) on the field location. Your Lat/long coordinate should pop up.



Step 6 (next page)

Step 6

Click on the lat/longs and they should automatically be copied to your clipboard. Or you can write them down on a piece of paper, and go back to the window with your Fall Report Survey. If you copied the lat/longs paste them into the survey field by clicking in the survey space and then holding down “command” and “v” to paste in your field lat/longs.



airtable.com

Outlook https://metal...MainContent RMFU mail grazing density worksheets Modesto MIL... Supplemen

Field Location - Lat/Long *

Please submit in LAT/LONG. You may enter a SINGLE point, preferably the approximate center of your field.

For coordinates, enter them in either DMS format (degrees, minutes, and seconds: 41°24'12.2"N 2°10'26.5"E) or DD format (decimal degrees: 41.40338, 2.17403).

On your computer, open Google Maps (<https://www.google.com/maps/>). Search the nearest address to your field. Right-click the place or area on the map where your field is located. To copy the coordinates automatically, click the latitude and longitude. Then paste into the box below.

If you are not able to enter the coordinates, please enter "N/A"

38.771585021021444, -97.56861715545122

Field Location - County, State *

Please enter the County and State in which your field is located. i.e. Platte County, WY

If you are located outside of the USA, please enter the nearest town or city as well as the country you are located in. i.e. Coalhurst, Canada

How many acres of Kernza did you plant at this field? *

Pasted in lat/longs by holding down “command” and “v”

All done! That’s it!! Thanks for providing the lat/longs of your field!